



„UNITRANS”

*ul. Dąbrowska 84*

*42-510 Wojkowie Kościelne*

[www.unitrans.net.pl](http://www.unitrans.net.pl)

[biuro@unitrans.net.pl](mailto:biuro@unitrans.net.pl)

tel./fax (032) 674 10 55/56

*SPECYFIKACJA I PARAMETRY  
TECHNICZNE SPRZĘTU CIĘŻKIEGO*

**ŻURAW GROVE 75 S**

**USA i RFN**

**Udźwig 45 t**

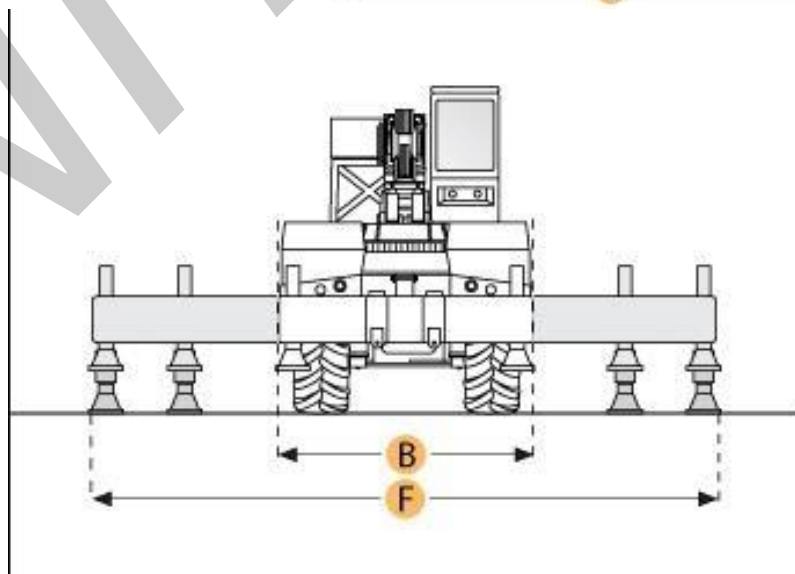
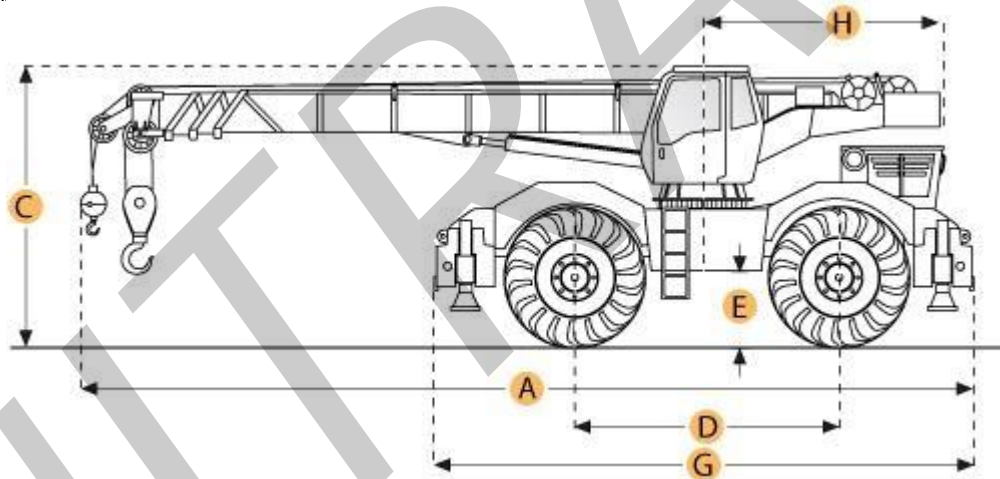
## 1. Wymiary

### Boom

I. MIN HEIGHT @ MAX RAISE ANGLE	33 ft in	10.1 m
J. MAX HEIGHT @ MAX RAISE ANGLE - NO JIB	112 ft in	34.1 m
K. MIN OPERATING RADIUS	3 ft in	0.91 m
L. MAX OPERATING RADIUS	26 ft in	7.9 m
M. MAX ELEVATING ANGLE	76 degrees	

### Dimensions

A. TRANSPORT LENGTH	41.2 ft in	12550 mm
B. TRANSPORT WIDTH	10.2 ft in	3120 mm
C. TRANSPORT HEIGHT	11.8 ft in	3610 mm
D. WHEELBASE	12.5 ft in	3810 mm
E. GROUND CLEARANCE	1.6 ft in	483 mm
F. WIDTH W/ OUTRIGGERS EXTENDED	23 ft in	7010 mm
G. CARRIER/BASE LENGTH	36.3 ft in	11050 mm
H. UPPER STRUCTURE TAIL SWING RADIUS	13.5 ft in	4110 mm



## Engine

MAKE	Detroit Diesel	
MODEL	6V-53N	
NET POWER	173 hp	129 kw
POWER MEASURED @	2500 rpm	
MAX TORQUE	396 lb ft	536.9 Nm
TORQUE MEASURED @	1500 rpm	
DISPLACEMENT	318 cu in	5.2 L

## Operational

OPERATING WEIGHT	67250 lb	30504.1 kg
FUEL CAPACITY	60 gal	227.1 L
HYDRAULIC SYSTEM FLUID CAPACITY	133 gal	503.5 L
OPERATING VOLTAGE	24 V	
ALTERNATOR SUPPLIED AMPERAGE	60 amps	
TIRE SIZE	21.00X25-24ply	

## Transmission

TYPE	remote mounted full powershift	
NUMBER OF FORWARD GEARS	6	
NUMBER OF REVERSE GEARS	6	
MAX SPEED - FORWARD	21.8 mph	35.1 km/h

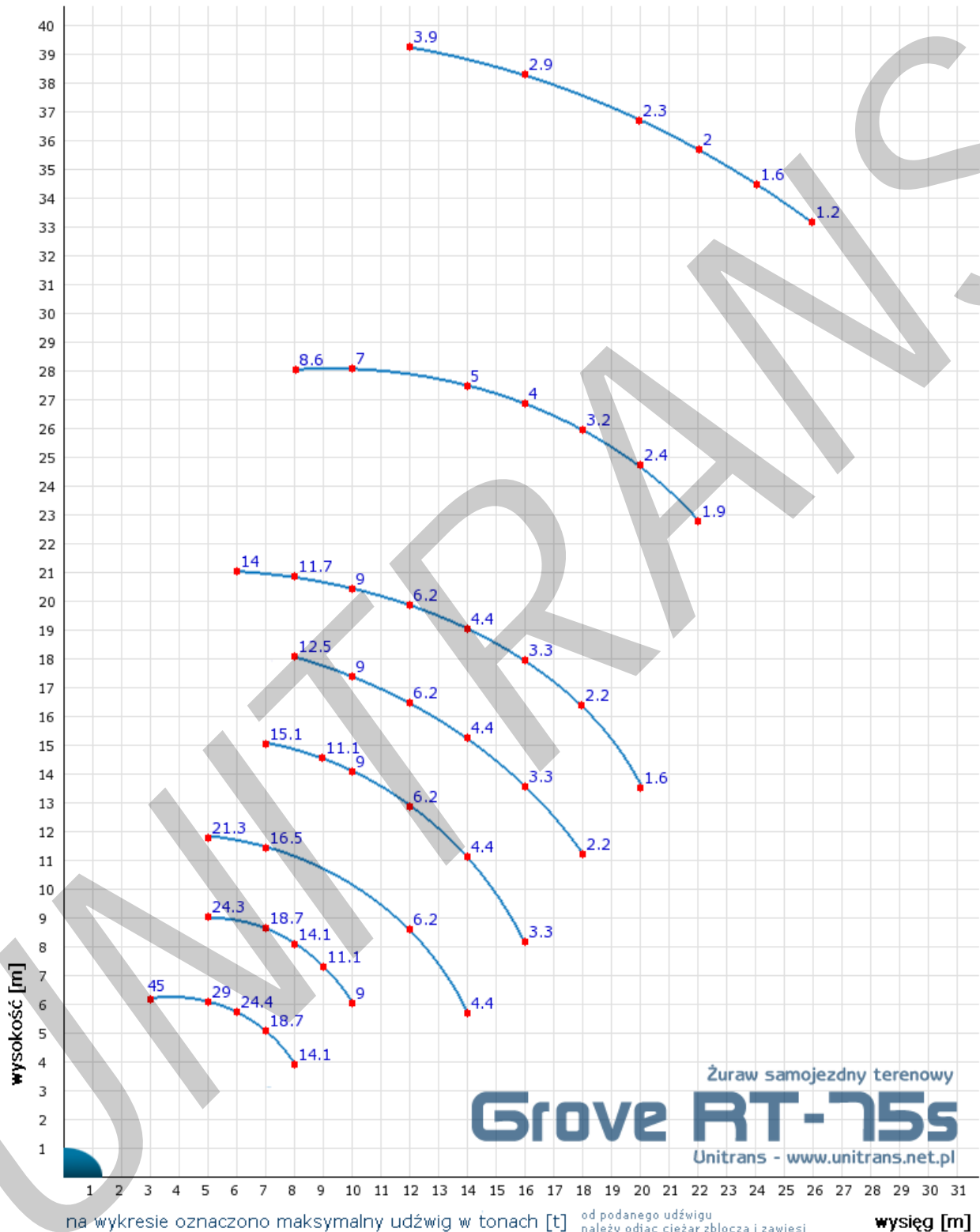
## Boom

NUMBER OF SECTIONS	4	
MIN HEIGHT @ MAX RAISE ANGLE	33 ft in	10.1 m
MAX HEIGHT @ MAX RAISE ANGLE - NO JIB	112 ft in	34.1 m
MAX ELEVATING ANGLE	76 degrees	
MAX LIFT CAPACITY	30000 lb	13607.8 kg
SWING SPEED	2.6 rpm	
MIN OPERATING RADIUS	3 ft in	0.91 m
MAX OPERATING RADIUS	26 ft in	7.9 m

## Dimensions

TRANSPORT LENGTH	41.2 ft in	12550 mm
TRANSPORT WIDTH	10.2 ft in	3120 mm
TRANSPORT HEIGHT	11.8 ft in	3610 mm
GROUND CLEARANCE	1.6 ft in	483 mm
WHEELBASE	12.5 ft in	3810 mm
WIDTH W/ OUTRIGGERS EXTENDED	23 ft in	7010 mm
CARRIER/BASE LENGTH	36.3 ft in	11050 mm
UPPER STRUCTURE TAIL SWING RADIUS	13.5 ft in	4110 mm

2. Wykres wysokości podnoszenia w zależności od długości wysięgnika i promienia wysięgu



### 3. Tabele udźwigu

Grove RT-75s																		
Wysięg R [m]	Kąt i długość wysięgnika 10,8 - 25,9 [m]														czwarta sekcja wysunięta mechanicznie		czwarta sekcja + wysięgnik mechaniczny	
	podpory wysunięte, praca 360														kąt		kąt	
	kąt	10,80	kąt	12,20	kąt	13,70	kąt	16,80	kąt	19,80	kąt	22,90	kąt	25,90	kąt	33,5*	kąt	43,25*
3	64	45,00	67	33,57	70	32,66	74	29,03										
3,5	61	37,42	65	32,12	68	30,62	72	27,08										
4	58	34,25	62	30,03	66	28,17	70	24,86	74	20,19								
4,5	55	31,98	60	27,88	63	26,08	69	23,00	72	19,78								
5	51	29,03	57	26,08	61	24,36	67	21,37	71	19,28								
6	44	24,49	51	23,13	56	21,37	63	18,64	67	17,19	71	15,88	74	14,06				
7	36	18,78	45	18,78	51	18,78	59	16,56	65	15,20	69	14,15	71	12,84				
8	26	14,16	37	14,16	45	14,16	55	14,16	61	13,47	66	12,57	69	11,79	74	8,69		
9			29	11,17	39	11,17	51	11,17	58	11,17	63	11,17	67	10,75	72	7,83		
10			16	9,08	31	9,08	46	9,08	54	9,08	60	9,08	64	9,08	71	7,05		
12							36	6,24	47	6,24	54	6,24	59	6,24	67	5,85	73	3,92
14							22	4,46	38	4,46	48	4,46	54	4,46	63	5,01	70	3,40
16									27	3,31	40	3,31	47	3,31	59	4,07	67	2,97
18											31	2,29	42	2,29	55	3,21	64	2,67
20											19	1,63	34	1,63	51	2,49	61	2,34
22													26	1,07	46	1,91	58	2,10
24															41	1,39	55	1,69
26															36	0,92	52	1,24
28															29	0,59	47	0,92
30																	44	0,65
32																	40	0,41

UNITRANS